



ASELSAN's ENTERPRISE ADOPTION of S1000D

NECDET TÜRKÖZ
Technical Publications Unit

aselsan

TECHNOLOGY SERVING PEOPLE & PLANET

ABOUT ASELSAN

12,000+
PROFESSIONALS

RADAR
EW
COMMUNICATIONS
MICROELECTRONICS
AVIONICS

SECURITY
TRANSPORTATION
ENERGY
HEALTHCARE

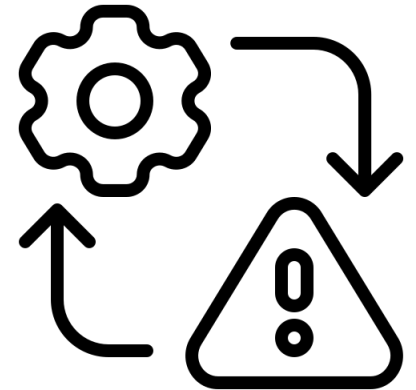
100+
SPECIALISTS
PRODUCING
500+
MANUALS/YEAR



PRE-S1000D CHALLENGE

Main Concerns

- **Fragmented workflows:** Teams using Word, PDF, InDesign, and custom tools
- **Field risks:** Outdated manuals causing safety incidents
- **Cost blowouts:** Manual processes consuming resources
- **Operational friction:** Duplication, version conflicts, and reuse barriers



BEST FIT CRITERIA

- **Codeless XML authoring** (WYSIWYG) for efficiency
- **Web-based Software** for centralized control without install/remove process
- CSDB, Writer Editor, Viewer, Media, BREX all together in one app
- **ERP/PLM/LLM integration infrastructure** for real-time data sync
- **LSAR interoperability**
- **Customer-Centric Service**

DRIVING FORCES FOR ADOPTION

Driving Factor	Impact
Quality & Accuracy	BREX Enforce Consistence, Fewer Errors
Lifecycle Support	Updates Defence Systems with 30+ year Service Lives
Complex Systems	Radar/EW/Avionics Modular Documentation Depth
Customer Requirements	International Customers, NATO Members, Collaborative Programs
Cost Efficiency	Reuse/Multiformat Publishing

SCOPE OF ADOPTION

AIR AND SPACE

FLIGHT MANUALS

MM

FAULT ISOLATION

IPD

WIRING DIAGRAM

NAVAL

PMS

WEIGHT BALANCE

CMM

IETM

SCORM

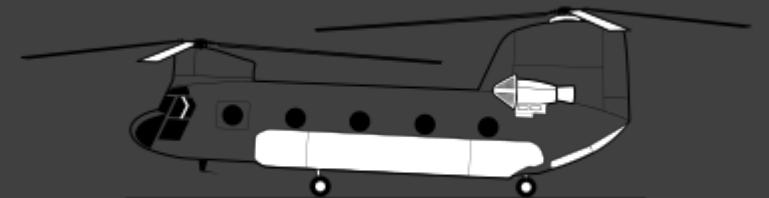
LAND

LSA DATA



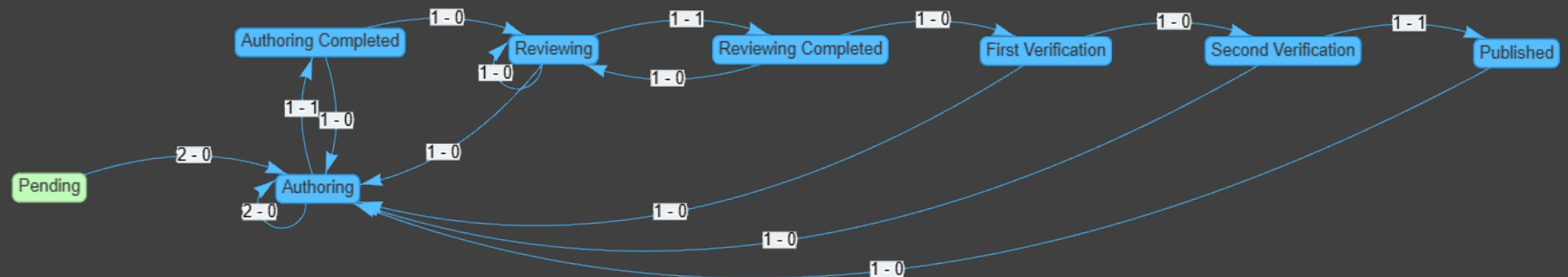
IMPLEMENTATION AND INTEGRATION

- **Solution must have** easy access to work for all different locationed technical writers/reviewers/domain experts
- **Scalability:** Security, Compliance and Performance
- **Pilot Project:** [CH47 Chinook] Countermeasure System IETM (IADS)



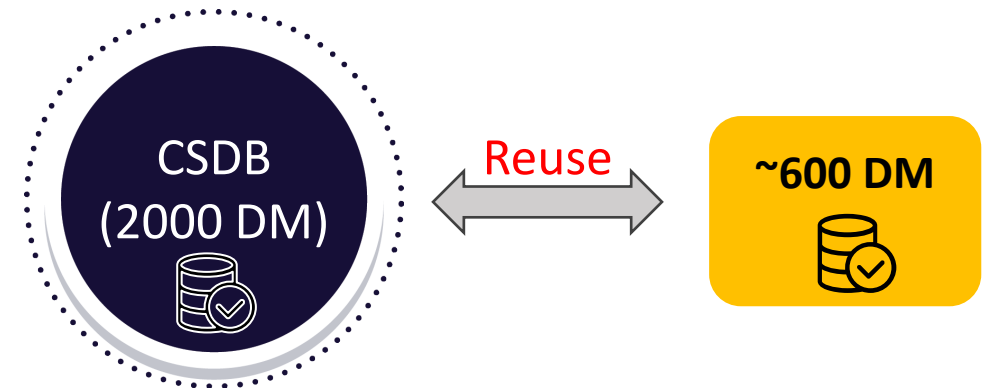
TEAM – CULTURE TRANSFORMATION

- Cultural shift
- **Change Management:**
 - Pilot projects demonstrating **faster delivery**
 - Executive-led "S1000D Days" for feedback
 - Incentives for early adopters
 - **Training:** BREX, CSDB, SNS, ICN, IETM System
 - User enablement roles and responsibilities
 - New workflows



ROLE OF CSDB

- Store Datamodules
- Manage Relationships
- Version and Configuration Control
- Workflow Management
- Productivity
- Reuse
- Configuration-Controlled Updates
- NATO-Compliant Publishing (PDF, IETP, XML)
- Cross-Team Collaboration



ROLE OF CSDB

- Interactive Graphics: HOTSPOT
- Illustration (.cgm/.svg) virtual elements with hotspot turn into interactive items
- Technicians can click to a complex component to access maintenance procedures



Table of contents

Ön Kapak - Kapak Sayfası

Telif Hakkı ve Sürüm Bilgisi - Telif Hakkı

Etkin Veri Modülleri Listesi - Etkin Veri Modülleri Listesi

Kısaltmalar Listesi - Kısaltmalar

İçindekiler - İçindekiler Listesi

Resimler Listesi - Şekiller

Tablolar Listesi - Tablolar

Destek Ekipmanları - Destek Ekipmanları

ÖN BÖLÜMLER

Tehlikeli ve Güçlü Elektromanyetik Yayınlam - Tanım

Acil Durumda Dikkat Edilecek Hususlar - Tanım

BÖLÜM 1: BİRİM GENEL TANITIMI

BÖLÜM 2: DONANIM DÜZELTİCİ BAKIM

BÖLÜM 3: YAZILIM ARAYÜZÜ VE KULLANIMI

BÖLÜM 4: EK BİLGİLER

aselsan

HİZMETE ÖZEL

KARETTA.TC079.05000.00

Tehlikeli ve Güçlü Elektromanyetik Yayınlam

Tanım

Açıklama

UYARI

SİSTEMİN YAKIN ÇEVRESİNDE KALP PİLİ, VB. TAŞIYAN İNSANLAR BULUNMAMALIDIR! KALP PİLİ VB. TAŞIYORSAN SİSTEMİN ÇEVRESİNDE BULUNMA!

UYARI

ELEKTRİK VE RF BAĞLANTILARINI, SİSTEMDE GÜÇ BULUNMASI DURUMUNDA YAPMA!

UYARI

SİSTEM ÇALIŞIR DURUMDAYKEN RF KABLOLARIN YERLERİNDEN ÇIKARILMASI SİSTEM VE PERSONEL SAĞLIĞI AÇISINDAN SAKINCALIDIR. SİSTEM ÇALIŞIR DURUMDAYKEN RF KABLOLARINI ÇIKARMA!

Uygulandı: Konfigürasyonlar: Hepsi

Veri Modülü Sonu

HİZMETE ÖZEL

KARETTA.AAA.CP0.00.0000.03AAA.040A.A

2024.09.11

OUTCOMES

- Standardized Authoring Process
- Reusable Data Modules
- Interactive Publications
- Collaboration and Version Control

IMPACT

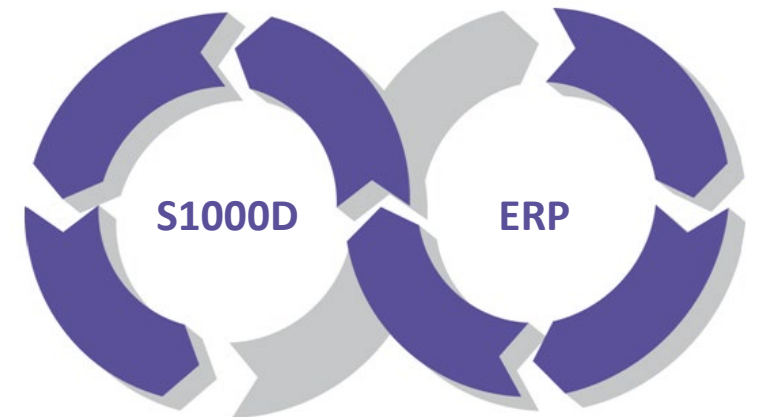
- Cost Reduction
- Superior Quality
- Faster Delivery
- Contract Compliance

LESSON LEARNED

- Comprehensive Training Program
- Team Member Unable to Recall Rules
- Frequent follow-up and Refresher Training
- Just in Time Learning
- In-house Trainers

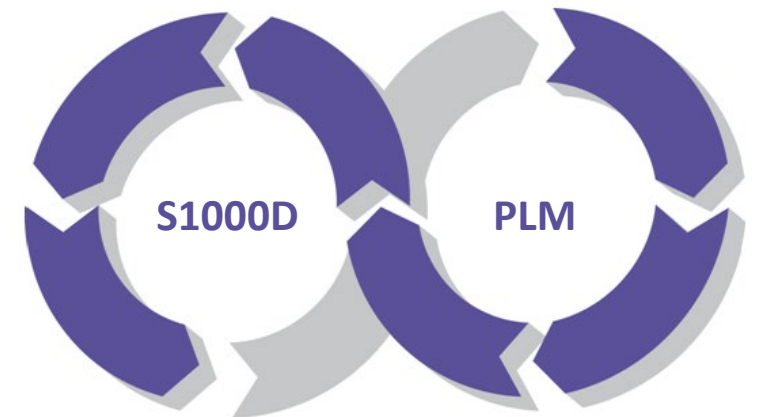
FUTURE PLANS

- Current Priority ERP Integration
- Engineering data, parts, configurations stored in SAP
- Manual data transfer is time consuming
- Automate data-flow
- Accurate Manuals-fewer errors.



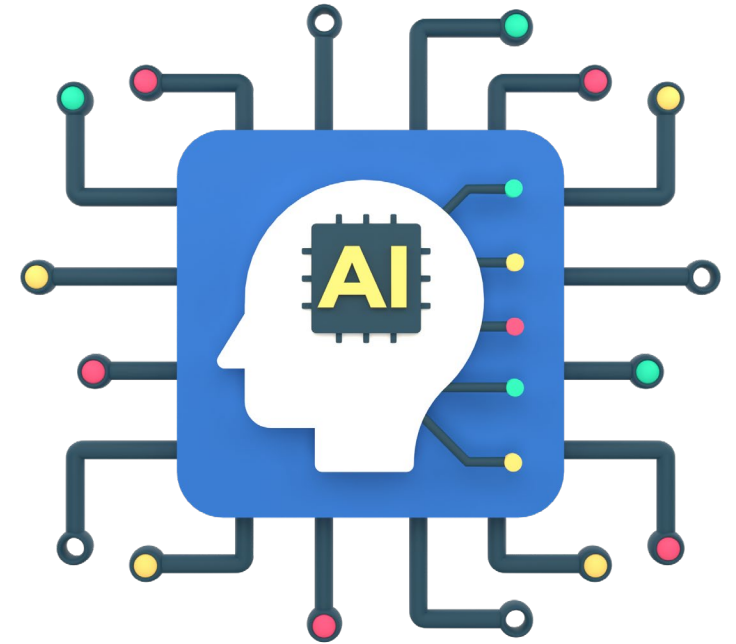
FUTURE PLANS

- PLM Integration for 3D visualizations and digital twin alignment
- Digital continuity from engineering to frontline maintenance



FUTURE PLANS

- Agent-Based AI Implementation
 - Content Management Agents
 - Hyperlinking Agent
 - Quality Assurance Agents



THE BIG PICTURE

- S1000D provided significant advantages.
- Connecting it ERP-PLM-AI will provide huge gains.
- The Ultimate goal is to create self improving cycle that drives efficiency, and creates new value.



CLOSING NOTE

THIS ENTERPRISE LEVEL ADOPTION
NOT JUST A DOCUMENTATION SHIFT
BUT A STEP
TOWARD

GLOBAL COMPETITIVENESS



BEYOND BORDERS FOR A BRIGHTER FUTURE



twitter.com/aselsan



[instagram.com/aselsan](https://www.instagram.com/aselsan)



facebook.com/aselsan



linkedin.com/company/aselsan

aselsan

TECHNOLOGY SERVING PEOPLE & PLANET